

Faculty Continue Active Research and Scholarly Activities

The Anthropology faculty continued its active record of scholarship. The faculty published 35 scholarly works that include one book, book chapters, articles, abstracts and 17 monographs. The unit continued its practice of publishing in both basic and applied research areas.

Christopher Hill authored six refereed publications during 2003. These included articles in *Current Research in the Pleistocene* and abstracts in the *Society for*



Dr. Christopher Hill

American Archaeology Program Abstracts, the *Third International Mammoth Conference*, and the *International Quaternary Association Congress (Stratigraphy and Geochronology Session)*. In addition he published three unrefereed abstracts in the *Workshops on Anthropology Abstracts*, National Research Centre, Cairo. During the calendar year he delivered two posters and three presentations at national and international meetings. He contributed peer reviews for the *Idaho Archaeologist* and *Geoarchaeology: An International Journal*, and submitted two faculty research grant proposals. His proposal for research into the "Quaternary Stratigraphy and Landscape Evolution in the Upper Missouri Basin, North America" was funded by CSSPA. He has submitted a manuscript for peer review to *Geoarchaeology: An International Journal*, and continues his active

geoarchaeological research program in Egypt and Western North America. He has three publications in preparation including *Geoarchaeology* (a second edition text with G. Rapp) to be published by Yale University.

Dr. Hill's professional activities included serving as a member of the Committee for the Douglass Kellogg Fund, Co-Chair of the Geoarchaeology Interest Group, and as Organizer and Chair of the 2003 Fryxell Symposium, for the Society for American Archaeology. In addition, he served on the Management Board of the Archaeological Geology Division and on the Joint Technical Committee for the Geological Society of America. Some highlights for 2004 include two papers accepted for *Current Research in the Pleistocene*, four peer-reviewed abstracts published, and two peer-reviewed papers in press. During the summer Dr. Hill also conducted field work as a visiting scholar at the Columbia Gorge Discovery Center excavating an Ice Age fossil site.



Dr. John Ziker

John Ziker authored five refereed publications during in 2003 and the first half of 2004, along with one book chapter. An article on forms of land tenure and management strategies among the Dolgan and Nganasan of Northern Siberia appeared in *Human Ecology*, and an article on kinship and friendship in Siberia appeared in *Sozil-*

(Continued on page 2)

Faculty Continue Active Research and Scholarly Activities

(Continued from page 1)

iar Sinn, a German sociological journal. A comment on "Population Growth, Carrying Capacity, and Conflict" by Dwight W. Read and Steven A. LeBlanc was appeared in *Current Anthropology*. A second comment on "To Give or Not to Give: The Behavioral Ecology of Human Food Transfers" by Michael Gurven appeared in *Behavior and Brain Sciences*. Dr. Ziker also published a review article titled "Anthropology of Eurasia: Postsocialism and Beyond" in *Reviews in Anthropology*. The book chapter on entitlements and sustainability of indigenous economic systems in Siberia appeared in *The Post-Socialist Agrarian Question*, Volume 1 of the Halle Studies in the Anthropology of Eurasia.

Throughout the 2003-2004 academic year, Dr. Ziker continued research on hunting, food sharing, hunter status, demographics and formation of social norms among indigenous communities in the Taimyr Autonomous Region, Russia. Dr. Ziker received funding through the Undergraduate Research Initiative in 2003-2004 to support student researchers assisting his Ust'-Avam Census. A number of students were recruited and they assisted in data compilation. Dr. Ziker presented two invited papers at the Max Planck Institute for Social Anthropology in Halle, Germany, one in 2003 on "Tradition and the Conflict between Generations in Taimyr" and the second in 2004 on "Rational Choice and Limits on Agency in Siberia." Another paper on the native logic and economic consequences of food sharing was presented at the 5th International Congress of Arctic Social Scientists in Fairbanks, Alaska in May. A paper on his research on Siberian hunter status was read at the 10th Human Behavior and Evolution Society meetings in Berlin, Germany in July. Dr. Ziker has three papers in press including contributions to *Human Nature*, *Nomadic Peoples*, and a chapter in *Ethnic Minorities in Entrepreneurship*.

Dr. Ziker's professional service includes serving as a blind reviewer of a proposal to the Arctic Social Science Program, National Science Foundation, as well as a reviewer for an article submitted to the

journal *Arctic*. He also reviewed a manuscript on human territoriality by Barton Thompson, and two dissertations, one by Florian Stammer on Nenets reindeer herding in Siberia, and the other by Michaela Pelican on inter-ethnic cooperation and conflict in the Cameroonian grasslands.

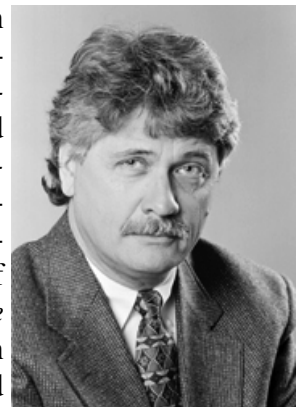


Dr. Robert McCarl

Robert McCarl continued his research on Shoshone-Paiute ranching in Duck Valley. He completed a CD Rom and Media project entitled, *Pakkiata: Shoshone-Paiute Buckaroos and Ranchers*. Dr. McCarl's book, *Latinos in Idaho*, also became available in early 2003 from the Idaho Humanities Commission. Dr. McCarl received a CSSPA Research Award to support travel to Duck Valley Reserva-

tion for consultation on archival materials. He participated in a roundtable discussion on "Labor Landmarks and Labor Culture" at the Southwest Labor Studies Conference at the University of California, Berkeley. He has an essay and a book review in press.

Mark Plew completed work on a new book manuscript entitled, *The Archaeology of Guyana*, which has been accepted for publication by *Archaeopress*. In addition, he published two monographs including an important summary of *The Archaeology of Antelope Creek Overhang* (with Sharon Plager and Chris Willson) and four articles. During this past summer he co-directed the



Dr. Mark Plew

Summer Archaeology Field School and has supervisory responsibility for five archaeological projects which included a Native American Archaeology Field School conducted in conjunction with the United States Air Force, Mountain Home Air Force Base.

Student Portfolio Program Aids Student Development

The department's student portfolio program is designed to assist students in their "professionalization" in anthropology. All majors are required to participate in the program which encourages the student to maintain in conjunction with an academic advisor, a record of their work and accomplishments while in the department. This may include academic papers, field reports, and documentation of participation in academic programs including internships, lectures, field schools, and attendance at professional meetings. The intent of the program is to encourage students to begin to participate in functions of the academic/professional community. During the senior year all graduating students register for ANTH 492, Practicum, which assists students in the final preparations of the portfolio, development of a formal curriculum vita and is concluded by an informal meeting of students and faculty. The portfolio is used by students in preparation of applications to graduate programs, for employment, and by faculty who utilize the documents to assist them in writing letters of recommendation.

Writing Techniques for the Anthropology Student

The department offered for the first time a one-credit, eight-week course for anthropology majors who were interested in achieving fuller mastery of writing in this discipline. The course was designed to meet students where they are in their development as academic writers and explore the writing process with them to enhance their skills in responding to a specialized audience. It emphasized analysis of texts as models, use of style guides, editing practice, and editing/support relationships with peers and faculty. The course promoted knowledge of publication and presentation criteria and provides consultation on students' ongoing writing projects so as to interpret and encourage preparation for the portfolio required by the department.



Students Achieve Highest Academic Honors

During the past year two Anthropology students achieved among the institution's highest honors. Nichole McDonald was named a Top Ten Scholar and Kersti Harter was named a Brown Scholar in the Honors College.

2004-2005 Departmental Lecture Series

- **Janette Bulkan**, Yale University School of Forestry, "*Producing People and Nature as Commodities—an Examination of the Results of Structural Adjustment Policies in the Guiana Shield Forests.*" November 11, 2004, Farnsworth Room in the SUB.
- **Andrea Freeman**, University of Calgary, April 2005.
- **Kerrie Ann Shannon**, Grand Valley State University, "*Understanding Subsistence and Distribution in an Inuit Community: When Games Are More Than Just Games.*" Spring 2005.

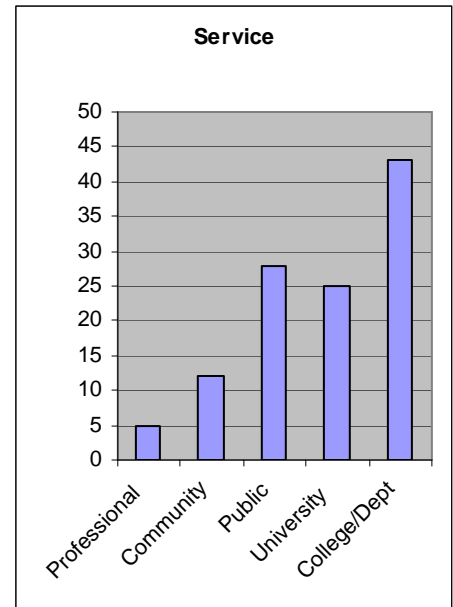
2004-2005 Friends of Anthropology Lecture Series

- In November 2004 **Hue Hsai Wu**, Department of Sociology, will speak on "*Cultural and Social Experience of Racial and Ethnic Minority Groups.*"
- In March 2005 **Dr. Lisa Brady**, Department of History, will speak on "*The Nature of War and Peace: An Environmental History.*"


Department Active in University and Community Service

The Anthropology department continues its active service commitment. In addition to professional service, the department faculty have during the past year served on more than one hundred department, college, and university committees and in numerous capacities in the community. Community involvements include consultations with

local and state organizations, and participation in a number of community-based programs such as Paint-the-Town, Partners in Education, Idaho Archaeology Week, the Meridian School District's fourth grade *Rendezvous*, the Farm Worker's Resource Committee, and the Longfellow School Math Laboratory program.



Native American Archaeology Field School



BOISE STATE
UNIVERSITY

366th Fighter Wing
Mountain Home AFB Idaho


Department of Anthropology
College of Social Sciences and Public Affairs

Native American Archaeology Field School

JUNE 21-JULY 11, 2004

The United States Air Force, Mountain Home Air Force Base, in conjunction with The Department of Anthropology, Boise State University, will offer an intensive three-week summer Archaeology Field School for Native American students. This pilot project is an introductory archaeology course that will instruct students in the basic techniques of archaeological data recovery and analysis. The course will consist of a week of classroom instruction on the Boise State University campus and two weeks of intensive training in archaeological field survey methods on Saylor Creek Air Force Range. Applicants completing the course will receive a Certificate of Completion and Credit Units through Extended Studies.

Applicants must be at least 18 years old and hold a high school diploma or equivalent. Enrollment, which is limited to 10 students, is free to applicants selected to participate in the Program. All costs associated with the field school including housing, food, camp fees, transportation, equipment, and incidental expenses will be provided by the Program.



The department received a \$160,000.00 three-year contract from the United States Air Force, Mountain Home Air Force Base to provide a three-week archaeological field school for students of the Shoshoni-Paiute tribes. Faculty and staff of the department hosted the students on campus in late June 2004 and conducted monitoring exercises of archaeological sites on the Saylor Creek Range.

Students spent the first week of the three-week program on the Boise State campus being introduced to basic archaeo-

logical methods. The following two weeks were spent in the field where students learned to record and map archaeological sites. The course provided an opportunity to expose BSU students to tribal insights and concerns regarding archaeology and the monitoring of pre-historic sites.

2004 Department Scholarship Donors:

Edith Benson, Gary Bowyer, Debra Demarais, Greg Leslie, Sharon & Willis Hubler, Idaho Chapter of Social Workers, Peter Lutze & Catherine Cote, Robert & Michelle McCarl, Mark Plew, Dean & Karen Shaw

If you are interested in making a donation to the Anthropology Department Scholarship Fund, please make your inquiries to:

Dr. Mark Plew, Chair
Department of Anthropology
1910 University Drive
Boise State University
Boise, ID 83725-1950

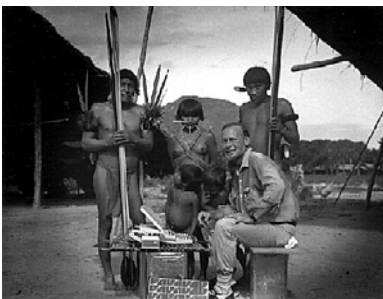
Department Lecture Series in Review

The department successfully completed its eighth year of inviting noted guest lecturers to Boise State University. These lectures included:

George "Rip" Rapp, Emeritus Professor of Geoarchaeology at the University of Minnesota, "Finding China's Lost Cities."

Aram Yengoyan, Professor of Anthropology at the University of California, Davis, "Simmel and Mann on the Tragedy of Modern Culture: Anthropological Reflections on German Thought, 1880's-1930's."

Napoleon Chagnon, Emeritus Professor Anthropology at the University of California, Santa Barbara, "Anthropological Field Research, Academic Politics, and Media Misrepresentation."



Dr. Napoleon Chagnon and the Yanomamö Indians

Katherine Seibold, Associate Professor of Anthropology at Albertson's College, "CUSCO Pilgrimages to Qollur Riti and El Senor de Haunca."

Friends of Anthropology:

The Friends of Anthropology lecture series is designed to facilitate communication and develop links between the department and other Boise State academic departments and programs that share basic and applied research interests. Within the past year the department hosted **Dr. David Wilkins**, Department of Geosciences, who spoke on "Late Holocene Environmental Change," and **Dr. Heidi Reeder** from the Department of Communication will spoke on "On Being Inter-sexed: A Case Study."

Final Field Season at 10-CN-6

The department completed its final season of excavation at site 10-CN-6 at Celebration Park near Melba, Idaho. Three years investigation have documented a Late Archaic component characterized by activities which include manufacture and maintenance of stone tools and animal processing. The excavations have also provided insights regarding the

geomorphic history of the area. A final report on the excavations is in preparation and will be available in spring 2005. The 2004 field crew included Sharon Plager, Tedd Jacobs, Mark Plew, Kara Hartman, Susan Hawkins, Joleen Crystal, David Seng, Jillian Martin, Julie Peterson, Valerie Mazzaglia, Haley Fitzsimons, Rebecca Baird, and Luke Bishop.

2003-04 Grants and Contracts

The Department was awarded grants and contracts totaling \$220,000.00. Projects were funded by a number of organizations including the Bureau of Land Management, the Idaho Army National Guard, the Kokopelli Research Fund, the European Union, Iwokrama International Rainforest Conservation and Development, and the United States Air Force.

Other News

- The department co-sponsored the 30th Annual Meeting of the Idaho Archaeological Society October 24-25, 2003 in the Lookout Room of the Student Union. A Friday evening lecture was given by Dr. Robert Yohe, California State University, Bakersfield, who spoke on recent research in Egypt. Students and faculty presented two papers at the conference entitled, "Archaeological Excavations at 10-CN-6" and "The Archaeology of Antelope Creek Overhang."
- The department received high marks in all areas of its performance during its 2003-2004 external review. Reviewers noted the department's exceptional performance in research and the receipt of external funding.
- Karen Wadley won a \$500.00 Undergraduate Research and Creativity award from the Office of Research Administration for her project "Alcoholism and Economy in Human Societies," working with Dr. Ziker's data from Siberia.

**DEPARTMENT OF ANTHROPOLOGY
COLLEGE OF SOCIAL SCIENCES
AND PUBLIC AFFAIRS**

1910 University Drive
Boise State University
Boise, ID 83725-1950

Phone: 208-426-3023
Fax: 208-426-4329
Email: fbrigha@boisestate.edu

028A100001

RETURN SERVICE REQUESTED

We're on the Web!
<http://anthro.boisestate.edu>

Student News

Anthropology Club

The officers for 2004-2005 are:

- Elisa Carlsen, President
- David Seng, Vice-President
- Brett Ritz, Treasurer
- Kersti Harter, Secretary

Archaeological Student Association

The officers for 2004-2005 are:

- Luke Bishop and Joleen Crystal, Co-Directors
- Events Coordinator is open
- Brad Burkett, Secretary/Treasurer

2004 Anthropology Graduates

Erin Boss, Rachael Gleason, Michael Karpinen, John Kennedy, Stephanie Lyle, Nikki McDonald, Terry Ford, Michael Grill, Shannon Hicks, Amanda Iverson, Jamey McReynolds, Naomi Ollie, Nate Poulton, Mary Wallace, Chris Willson

Dean's List Spring 2004

Highest Honors: Luke Bishop, Shelby Day, Paige Diamant, Sean Gould, Kersti Harter, Shannon Hicks, Jessica Hood, Naomi Ollie. **High Honors:** Elisa Carlsen. **Honors:** Leif Anderson, Hayley Fitzsimons, Jackson Irish, Amanda Iverson, Teresa Sanders, David Seng, Lesley Spencer

2004-2005 Scholarship Recipients

Elisa Carlsen, Shelby Day, Kersti Harter, Brett Ritz and Lesley Spencer received Anthropology Department scholarships. Naomi received the Roderick Sprague Archaeology Book Award. Shannon Hicks received the Liljeblad Cultural Anthropology Book Award. Victor Buckingham received the Native American Student Scholarship.

Alumni News

Marc Munch (BA '95) was recently hired as an archaeologist by the Idaho Department of Transportation.

Toni Lawson (BA '99) became Health Policy Advisor to U.S. Senator Larry

Craig, U.S. Senate Special Committee on Aging.

Susan Osgood (BA '90) was recently named Boise National Forest Archaeologist.

Jake Fruhlinger (BA '98) completed his M.A. at the University of Idaho and has been hired as the first Cultural Resources Specialist for the Idaho Army National Guard.

Nicole McDonald (BA '04) was named a Boise State University Alumni Association Top 10 Scholar.

Lisa Jean Hughes (BA '97) received her Juris Doctor degree from the University of Oklahoma College of Law.

Erin Boss (BA '04) is employed with Americorps in Bellingham, MT.

Recent graduates **Chris Willson** and **Naomi Ollie** (BA '04) are attending graduate school in anthropology at the University of Idaho and Colorado State University, respectively.

Jennifer Bedford (BA '03) is a research assistant in the Graduate Program at the University of North Texas.